

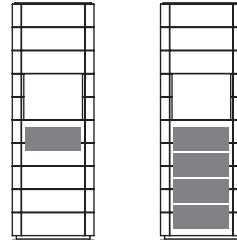
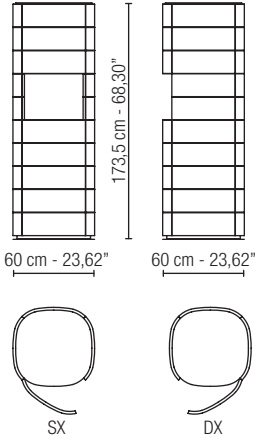


RADICALMENTE ELEGANTE,
ELEGANTEMENTE ICONICA.
CON LA COLLEZIONE COMO, MILANO 1964
PROCLAMA IL SUO MANIFESTO DI AUDACE
RICERCA ARTISTICA. FORME DECISE
E LINEARI CHE ACCOMPAGNANO LO SGUARDO
LUNGO OGNI SUPERFICIE. COLORI RICCHI,
CON SFUMATURE INEDITE. OGNI DETTAGLIO
DELLA COLLEZIONE COMO RICHIAMA
LA STORIA DI UNA CITTÀ IMPEGNATA
IN UN'INDAGINE ESTETICA CONTINUA.
DAL DESIGN CHE NASCE DALLA SINTESI
CONTINUA TRA UN PASSATO
INTRAMONTABILE E UN FUTURO IDEALE,
LA COLLEZIONE ESULA IL SOLO MONDO
DELL'ARREDO E SI FA PORTATRICE DI VALORI,
MESSAGGI E LINGUAGGI SENZA TEMPO.

RADICALLY ELEGANT,
ELEGANTLY ICONIC.
WITH THE COMO COLLECTION,
MILAN 1964 PROCLAIMS ITS MANIFESTO
OF DARING ARTISTIC RESEARCH.
LINEAR AND DECISIVE FORMS THAT
ACCOMPANY THE GAZE ALONG EVERY SURFACE.
RICH COLORS, WITH NEW SHADES. EVERY
DETAIL OF THE COMO COLLECTION RECALLS
THE HISTORY OF A BUSY CITY IN A CONTINUOUS
AESTHETIC INVESTIGATION. FROM THE DESIGN
THAT COMES FROM THE CONTINUOUS SYNTHESIS
BETWEEN A PAST TIMELESS AND AN IDEAL FUTURE,
THE COLLECTION GOES BEYOND THE
WORLD OF FURNITURE ALONE
AND BECOMES THE BEARER OF TIMELESS
VALUES, MESSAGES AND LANGUAGES.

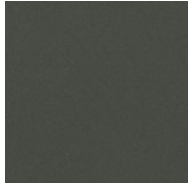
TOTEM 2 ANTE + VANO A GIORNO CON LED/2 DOORS + NICHE WITH LED LIGHT

DISPOSIZIONE CASSETTI/DRAWERS LAYOUT

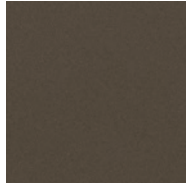


FINITURA ESTERNA/OUTSIDE FINISH

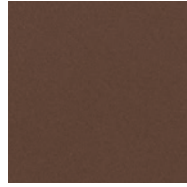
LACCATO METALLIZZATO
METALLIZED LACQUERED



MT1 - Grigio Piombo Metallizzato
MT1 - Lead Grey Metallized Lacquer



MT2 - Bronzo Metallizzato
MT2 - Bronze Metallized Lacquer



MT3 - Rame Metallizzato
MT3 - Copper Metallized Lacquer

LACCATO OPACO
MATT LACQUERED



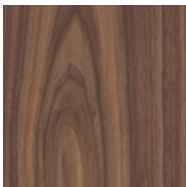
L01 - Ral 9004
L01 - Ral 9004

FINITURA CORPO TOTEM INTERNO/INSIDE FINISH

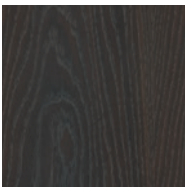
LEGNO
WOOD



RN - Rovere Naturale
RN - Natural Oak



KN - Noce Canaletto
KN - Canaletto Walnut



RT - Rovere Termotrattato
RT - Heat-Treated Oak